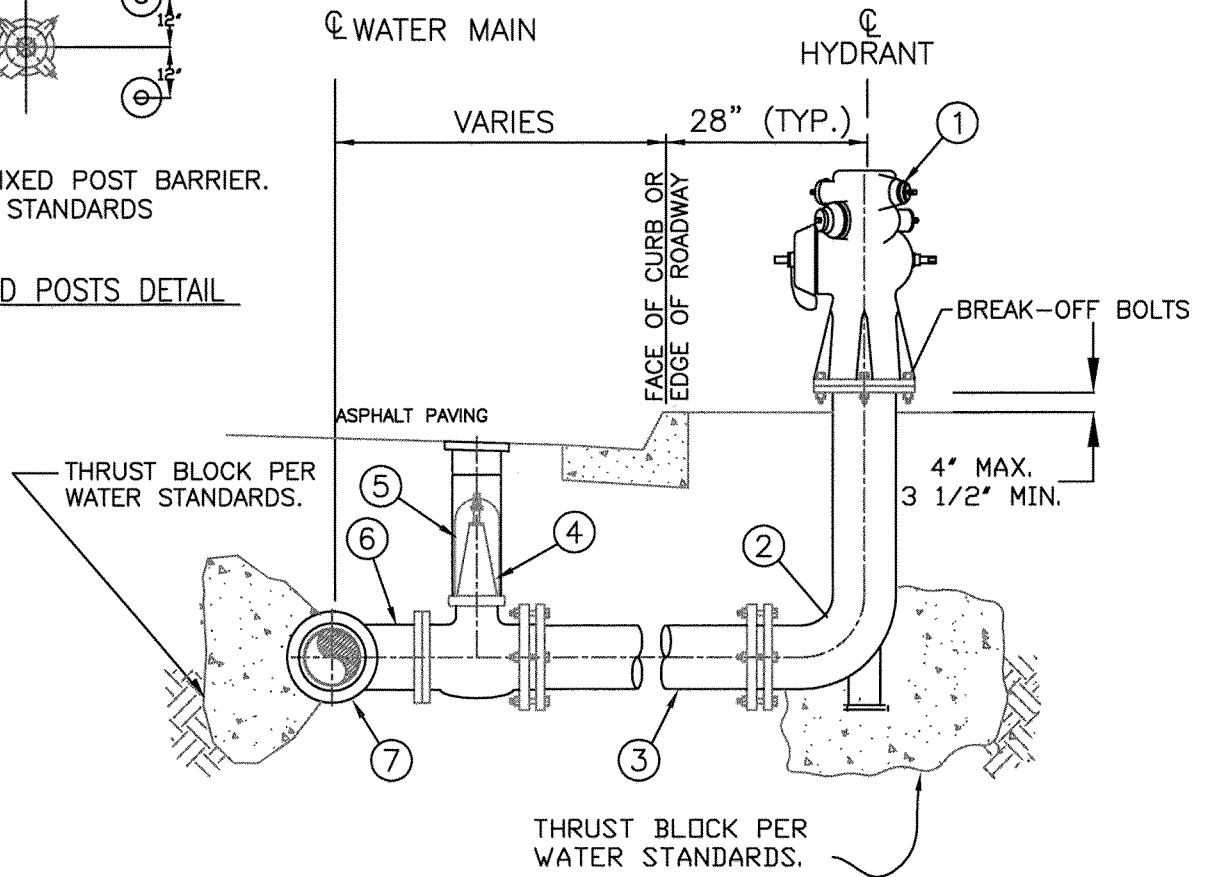


6' FIXED POST BARRIER.
SEE STANDARDS

GUARD POSTS DETAIL



- ① 6" SOLID BRONZE HEAD 2-1/2" AND 4" OUTLET, JONES NO. J-3700 (EASTBAY TYPE) OR EQUAL - IN COMMERCIAL & INDUSTRIAL AREA USE JONES NO. J-3765. PAINT THE EXTERIOR w/ (2) COATS OF RED PRIMER, RUST-OLEUM NO. 769 AND FINISH w/ ONE COAT OF YELLOW, RUST-OLEUM NO. 659.
- ② 6" FLANGE X M.J. BURY ELBOW, 6H.
- ③ 6" DUCTILE IRON PIPE, CLASS 350.
- ④ 6" GATE VALVE - FLANGE X M.J., MUELLER A-2360-16 AFC 500, OAE. MINIMUM 10' SEPARATION TO FIRE HYDRANT
- ⑤ STEEL PIPE AND SLIP JOINT BOX ASSEMBLY AS PER WATER STANDARDS.
- ⑥ 6" FLANGED OUTLET ON TEE.
- ⑦ TAPPING SLEEVE FOR D.I.: ROMAC SST WITH D.I. FLANGE, OAE. TAPPING SLEEVE FOR STEEL: FULL CIRCLE STAINLESS STEEL TAPPING SLEEVE.

NOTES:

1. FIRE HYDRANTS INSTALLED ALONG STREETS OR ROADS WITHOUT CURBS SHALL BE PROTECTED WITH GUARD POSTS PER DETAIL.
2. EACH FIRE HYDRANT SHALL HAVE BLUE PAVEMENT MARKER NEXT TO THE STREET CENTER LINE, ON THE SAME SIDE AS FIRE HYDRANT.
3. MAXIMUM 150 psi WATER WORKING PRESSURE

WATER STANDARD



DRAWN: NGUYEN BUI

DATE: 08-25-2001

SCALE: AS SHOWN

FIRE HYDRANT ASSEMBLY

APPROVED: *Chet F. Anderson* 4 0 3 3 0 05/09/06
ASSISTANT DIRECTOR - WATER OPERATIONS RCE NO. DATE

DWG. NO.

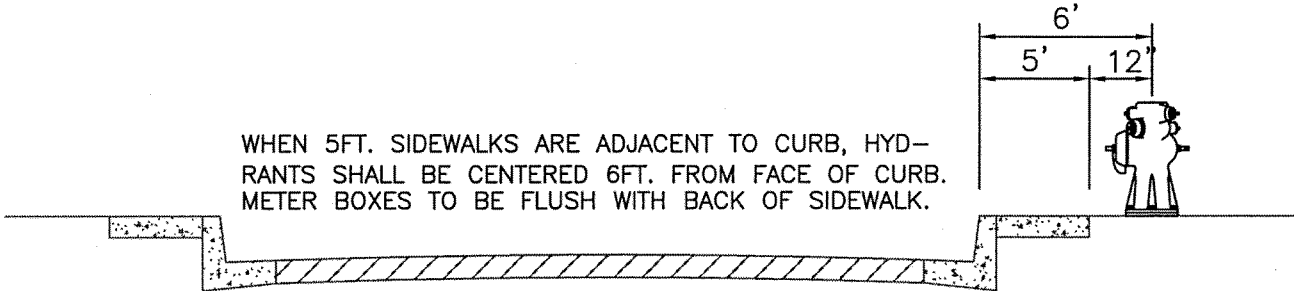
W - 11

SHEET
1 OF 2

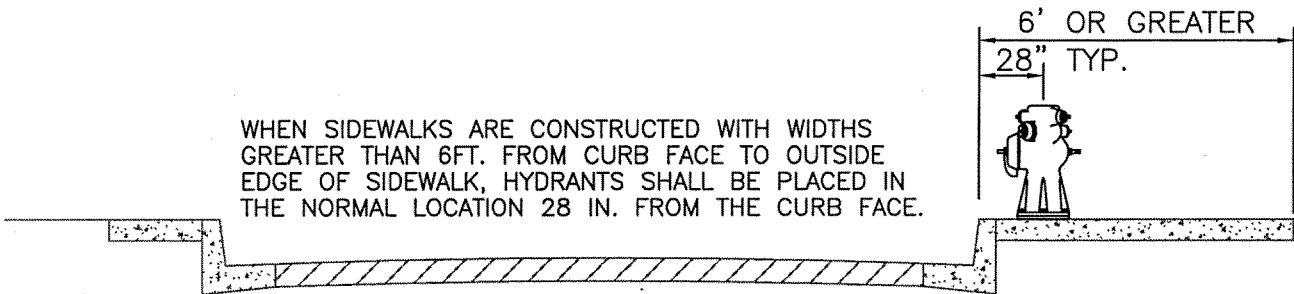
LOCATION OF ABOVE-GROUND UTILITIES

WHEN SIDEWALKS ARE CONSTRUCTED ADJACENT TO THE CURB, ABOVE GROUND UTILITIES, INCLUDING AIR AND VACUUM VALVES, FIRE HYDRANTS, BLOW-OFFS, METER BOXES, ETC. SHALL BE LOCATED AS FOLLOWS:

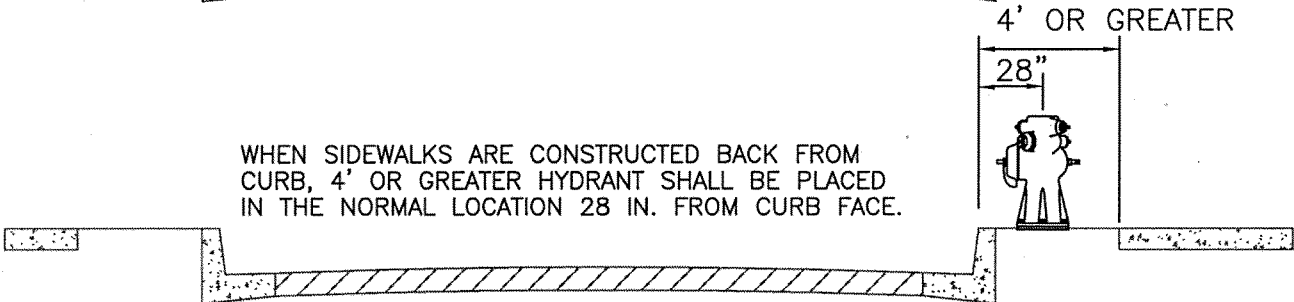
WHEN 5FT. SIDEWALKS ARE ADJACENT TO CURB, HYDRANTS SHALL BE CENTERED 6FT. FROM FACE OF CURB. METER BOXES TO BE FLUSH WITH BACK OF SIDEWALK.



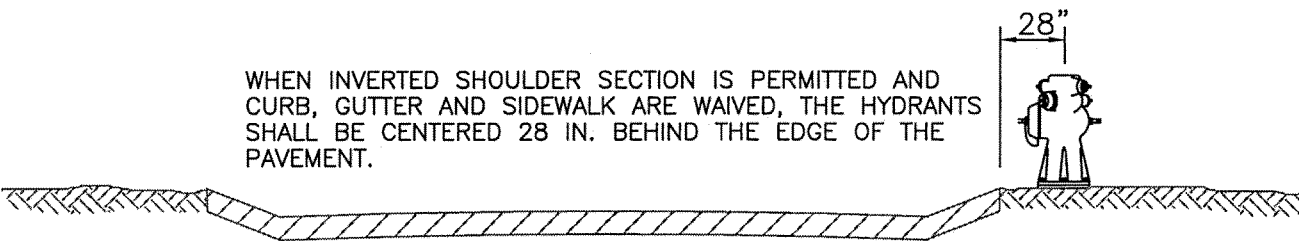
WHEN SIDEWALKS ARE CONSTRUCTED WITH WIDTHS GREATER THAN 6FT. FROM CURB FACE TO OUTSIDE EDGE OF SIDEWALK, HYDRANTS SHALL BE PLACED IN THE NORMAL LOCATION 28 IN. FROM THE CURB FACE.



WHEN SIDEWALKS ARE CONSTRUCTED BACK FROM CURB, 4' OR GREATER HYDRANT SHALL BE PLACED IN THE NORMAL LOCATION 28 IN. FROM CURB FACE.



WHEN INVERTED SHOULDER SECTION IS PERMITTED AND CURB, GUTTER AND SIDEWALK ARE WAIVED, THE HYDRANTS SHALL BE CENTERED 28 IN. BEHIND THE EDGE OF THE PAVEMENT.



WATER STANDARD



DRAWN: NGUYEN BUI

DATE: 04-05-2001

SCALE: AS SHOWN

LOCATION OF ABOVE GROUND UTILITIES

APPROVED: *Cher F. Anderson* 4 0 3 3 0 03/22/05
 ASSISTANT DIRECTOR - WATER OPERATIONS RCE NO. DATE

DWG. NO.

W - 11

SHEET
2 OF 2